
mediclinics
www.mediclinics.com

HAND DRYERS

M06A / M06AC / M06ACS / M06AF / M06AB

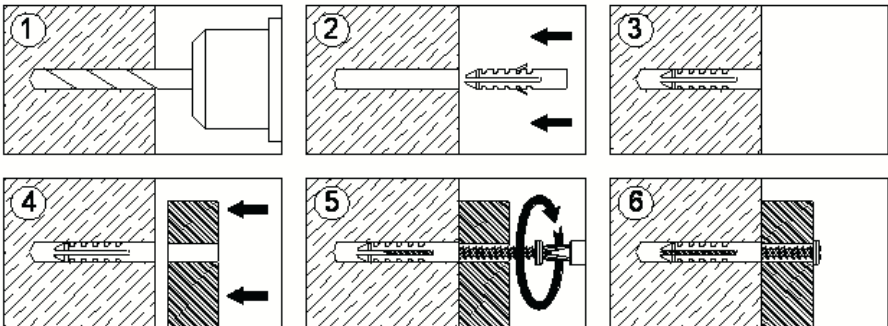


INSTALLATION AND OPERATING MANUAL

ANNEX

MOUNTING INSTRUCTIONS.

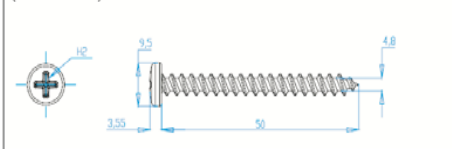
- To mount onto wall, be sure there are no hidden electrical circuits or pipes in the mounting location.
- Place the mounting template (provided) on the wall to mark location of four mounting screw holes.
- Drill four holes (Fig.1) Ø8 (5/16") diameter and 45mm (1 ¾") depth.
- Take off the residual dust from the holes.
- Insert nylon plugs (provided) into four holes (Fig.2-3).
- Place base plate on wall (Fig.4).
- Fix the base plate firmly on the wall (Fig.5-6).



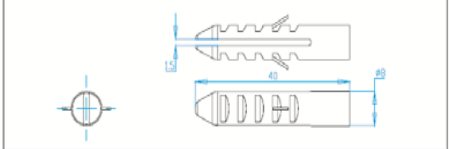
MOUNTING ITEMS PROVIDED.

- 4 screw.
- 4 Plug.
- 1 Mounting template.
- 1 Instruction manual.

(DIN 7505B) SCREW D-05x50 ZB



NYLON PLUG D8



INTRODUCTION

The Hand dryers Speedflow family has the following technical features:

- Automatic operation (IR sensors).
- Universal input voltage. Hand dryer works at 100-240 V and 50/60 Hz range.
- Adjustable range detection (50-230 mm)
- Motor speed adjustable.
- Vandal proof operation system (no more than 60 seconds of continuous running).
- ADDAG compliance (ADA Accessibility Guideline).

INSTALLATION

Mains connection and regulations of motor speed and range detection must be handled by an authorized technician.

The appliance is supplied with the two lower screws screwed to the base that secures the cover from the inside.

The cover should be removed in the following manner:

- 1.- Screw the lower screws in a clockwise direction (CW) with the supplied special tool until they are fully screwed in place (see figure n° 1).
- 2.- Remove the cover by raising it a slight angle until the upper securing tab is freed (see figure n° 2). Remove the cover in a vertical direction without striking the inside of the machine (see figure n°3).

WARNING: when the cover is removed, live parts of the appliance are exposed

During this operation do not:

- Damage any internal components, especially the electronic circuit housed under the volute (see figure n° 4).
- Scratch the cover or the visor of the IR sensor.



Figure n° 1



Figure n° 2

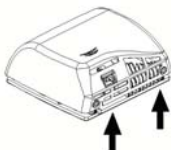


Figure n° 3

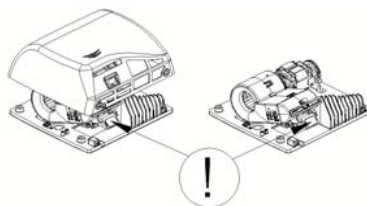


Figure n° 4

The appliance's electrical installation is made via rear channelling (see figure n° 5), as follows:

- 1.- Drill four Ø 8 mm (Ø 0.31") holes using the supplied template. Clean up the holes once they have been made. Insert the four plugs until they are flush with the surface (see figure 6).
- 2.- Pass the 3 electric cables (3 cables 16 AWG/105°C) from the wall through the entrance hole (Ø 22 mm - Ø 0.87" -) as figure n° 8 shows.

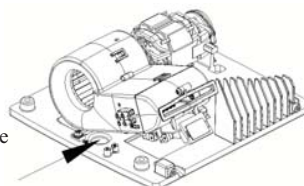


Figure n° 5

Means for disconnection with contact separations at least 3 mm (0.12") must be incorporated in the fixing wiring.

INSTALLATION

During the installation process, the protection areas should be considered according to Standard VDE 0100.

- 3.- Assure that the four silent blocks of the base-plate are properly located. Screw in the four supplied screws to firmly secure the base of the appliance to the wall (see figure 7).
- 4.- Connect the Neutral and Line (N, L) wires to the terminal block and the A/V cable to the earth connection screw (Class I) as figure n° 8 shows.
- 5.- Installing the cover on the hand dryer taking care to insert the upper tab in its housing in the base-plate (see figure n° 9).
- 6.- Unscrew the screws in a counter-clockwise direction (CCW) using the supplied special tool (see figure 10).
- 7.- Place the hands inside the detection area of the appliance in order to assure the right performance of the hand dryer.

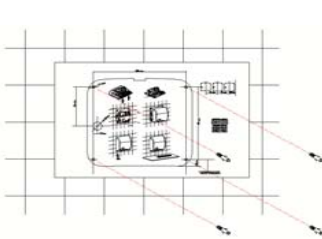


Figure n° 6

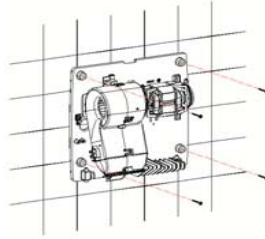


Figure n° 7



Figure n° 8

Care must be taken during this operation not to touch the electronic circuit that is housed under the volute.

NOTE: a minimum distance of 40 cm (15.8") must be allowed between any possible shelves, marble or washbasins (see figure 11). As far as possible, reflecting surfaces should be avoided within the operating range of the IR sensors.

MACHINE MUST BE HANDLED ONLY BY AN AUTORIZED TECHNICIAN.

The hand-dryer must only be installed on a closed surface, such as a wall, partition or similar.

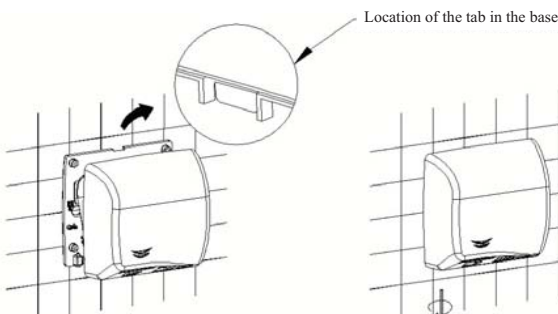


Figure n° 9

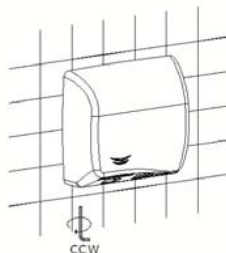


Figure n° 10

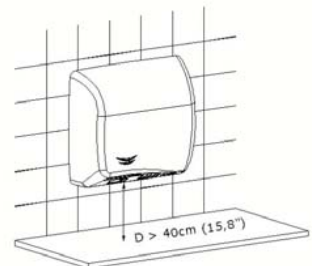


Figure n° 11

INSTALLATION

SPEED MOTOR REGULATION AND RANGE DETECTION ADJUSTMENT

These adjustments must be done only by an authorized technician.

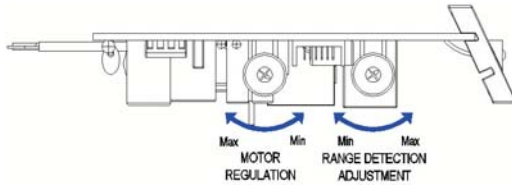
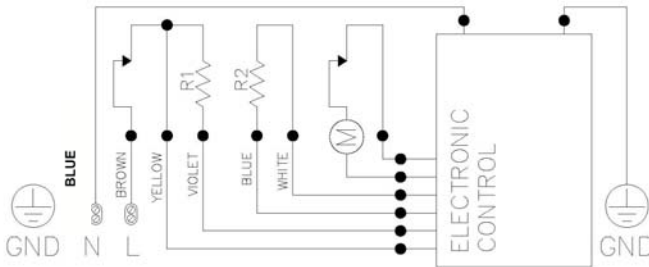


Figure n° 12

Regulation of the hand dryer speed motor will be done using the potentiometer of speed motor regulation as figure n° 12 shows.

Range detection adjustment is done with the other potentiometer, as figure n° 12 shows as well.

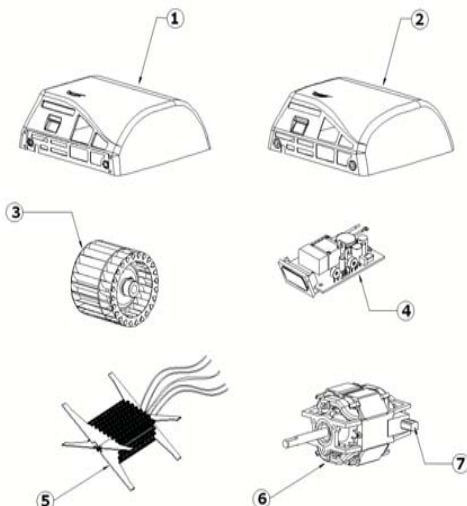
WIRING DIAGRAM



M - Motor

R - Heating element

BREAKDOWN LIST OF BASIC PARTS



Cast iron cover	1	Cod. RC9231001SMD
White cover	2	Cod. RC9224001SMD
Brilliant cover	2	Cod. RC9213001SMD
Satin cover	2	Cod. RC9212001SMD
Turbine	3	Cod. RC9151001SMD
Electronic sensor	4	Cod. RC9121005SMD
Heating element	5	Cod. RC9141004SMD
Motor	6	Cod. RC9111002SMD
Motor brushes	7	Cod. RC9491001SMD

METHOD OF USE

Speedflow hand dryers family operates by hands detection when it detects their presence. To dry hands correctly we recommend rising well to remove all traces of soap.



Figure n° 13

If hands are held 60 - 70 mm. (2.36 - 2.76") from the air outlet, the hand dryer will automatically start-up (see figure n° 13). The machine will stop 2 - 3 seconds after use.

Range detection can be adjusted turning around the potentiometer as figure n° 12 shows.

This hand dryer has a system to avoid vandalism and for this reason the device will completely stop working after 60 seconds operating without interruption.

This appliance is not intended for use by persons (including children) with reduced physical, sensory or mental capabilities, or lack of experience and knowledge, unless they have been given supervision or instruction concerning use of the appliance by a person responsible for their safety.

CHILDREN SHOULD BE SUPERVISED TO ENSURE THAT THEY DO NOT PLAY WITH THE HAND DRYER.

PREVENTATIVE MAINTENANCE AND CLEANING

Correct cleaning of the machine will lengthen its working life considerably.

When in use, the machine will accumulate dust inside which should be cleaned out if used regularly, at least once a year.

CLEANING METHOD

- 1.- Remove the mains supply to the hand-dryer.
- 2.- Remove the cover (see the section "INSTALLATION" in this manual).
- 3.- Clean away any accumulated dust on the scroll-fun with a soft-bristle brush while rotating it manually.
- 4.- Use the same brush to clean away all accumulated dust from the other components.
- 5.- Use a medium brush to clean the air inlet grill. Check the motor brushes condition. These should be replaced when they are less than 5 mm (0.2").
- 6.- Carefully remove any dust from the electronic circuit using a fine brush. Check that there is no dust or other dirt on the hand-detection sensors.
- 7.- Ensure that the IR LED visor is totally clean.
- 8.- Start up the machine and leave until no further dust remaining from the cleaning process, comes out from the air outlet.

CLEANING OF THE COVERS

For cleaning purposes only a wet cloth is to be used. Do not use any kind of detergent, acids, lye, abrasives, hydrochloric acid, etc.

Take care not to damage or force any component.

NOTE: All maintenance and cleaning processes must be carried out by qualified personnel.